



Your home in the mountains

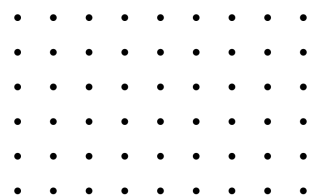


WELCOME TO

POETRY BY THE HILLS

YOUR HOME IN THE MOUNTAINS

Your Ideal Leisure & Adventure Destination
In Mukteshwar, Uttarakhand

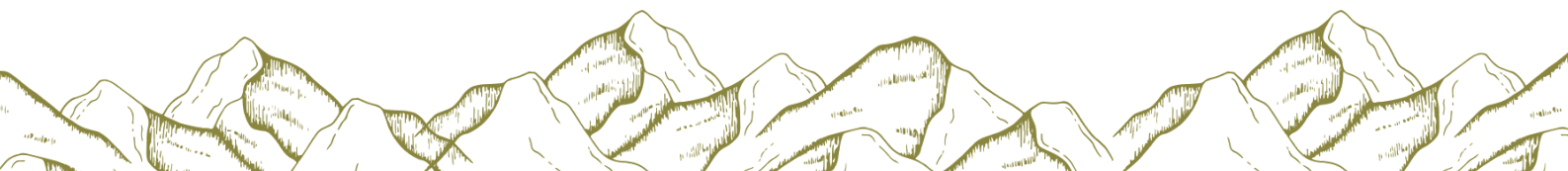




Blissful Stay In Mukteshwar

A travel destination blessed with picturesque glimpses of nature, lush green landscape and a splendid view of the Himalayan ranges.

From dense forest to the enchanting backdrop of the Himalayas, Mukteshwar is a dream destination for nature lovers offering a perfect place for a peaceful vacation.





IT'S TIME TO UNLOCK YOUR KNOTS!



Plan Your Perfect Mountain Getaway With Poetry By The Hills

When life gives you a reason to travel, it's a signal to hop onto the bandwagon, hitch a ride, and drift towards **Poetry By The Hills**. Perched serenely in the lap of nature, the peace and solace of this place will absorb all your stress as you spend some quality time with your loved ones.

Experience the tranquillity of nature from the comfort of your room as all our rooms face the snow-capped Himalayas from 7000 Ft above sea level.

Watch the valley, gaze at infinite stars, and hum to your favorite tune; it's time to get bewitched by the timeless beauty of Mukteshwar. The cottage surrounded by lofty mountain peaks makes it an ideal place for all kinds of travellers.



MAJOR TOURIST ATTRACTIONS

DISTANCE FROM PROPERTY

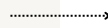
Mukteshwar

(8th Century Shiva Temple, Chauli ki Jali, Bhalu Gaad Waterfall, Methodist Church)



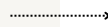
6-12 Kms Drive/15-30 mins

Bhimtal / Naukuchiyatal



25-30 kms / 45-60 Mins

Nainital



40-45 Kms/1.5 hours

Almora/Ranikhet



55-75 kms / 2-3 hours





AMENITIES

- WiFi
- Hot Running water in the Bathroom/Kitchen
- Oil Radiators for Heating
- Close to nature & Lawns for outdoor seating
- Free Car parking
- BBQ facilities
- Staff for Cooking & Housekeeping
- Scrumptious home-cooked food to tickle your taste buds
- Pet Friendly

ACTIVITIES

- Trekking/Hiking to nearby trails
- Nature Walk
- Bird Watching
- Village Tours
- Star Gazing
- Pahadi/Kumaoni Cuisine
- Adventure Activities
- Paragliding
- Mountain Biking
- Meditation & Yoga
- Card & Board Games

-
-
-
-
-
-
-
-
-
-





HOW TO REACH POETRY BY THE HILLS

BY ROAD (From Delhi)

Delhi to
Poetry By The Hills

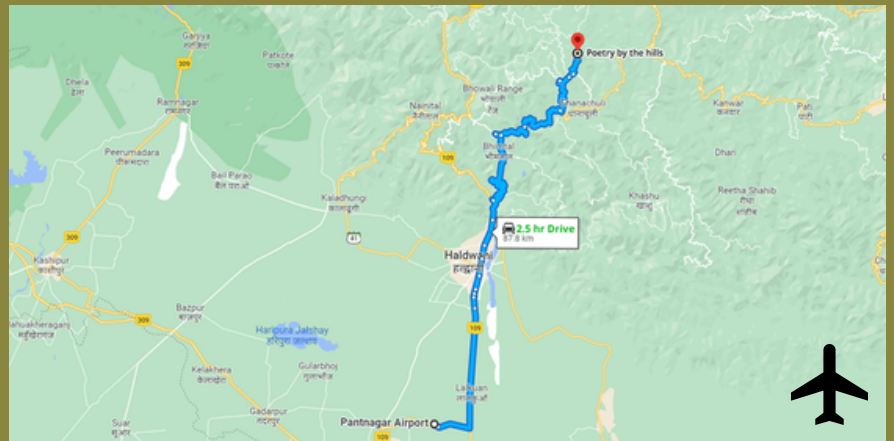
Via Hapur, Moradabad,
Rampur, Haldwani, Bhimtal
Time: 7-8 Hrs Drive



BY AIR

Pantnagar Airport to
Poetry By The Hills

Time: 2.5-3 Hrs Drive



BY TRAIN

Haldwani/Kathgodam
Railway Station to
Poetry By The Hills

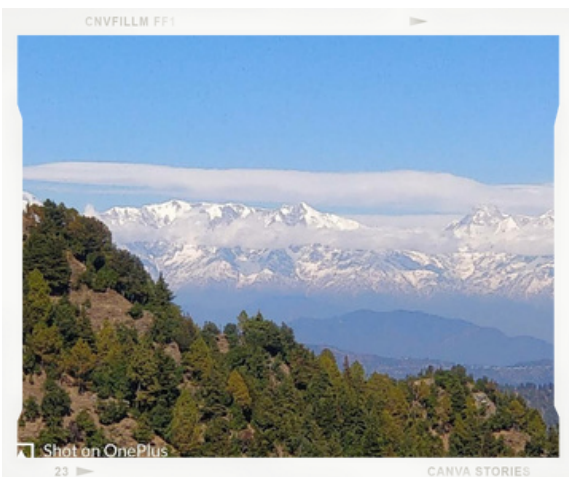
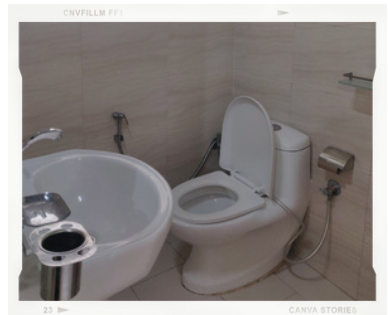
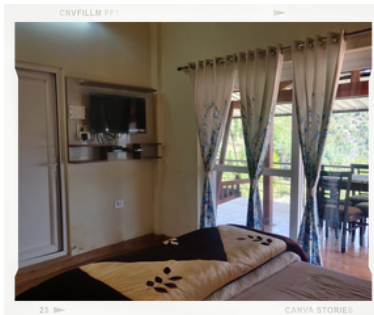
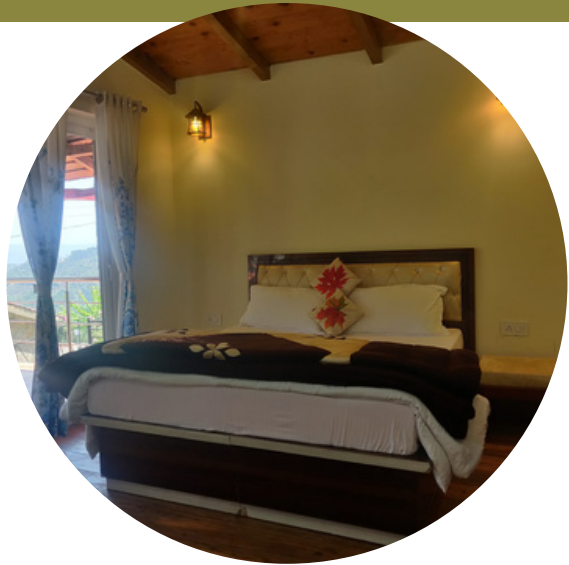
Time: 2 Hrs Drive



ACCOMMODATION OPTIONS

PREMIUM ROOMS IN A 4 BHK COTTAGE

**Rs. 4000/- Per Night
on Double Occupancy
(without meals)**

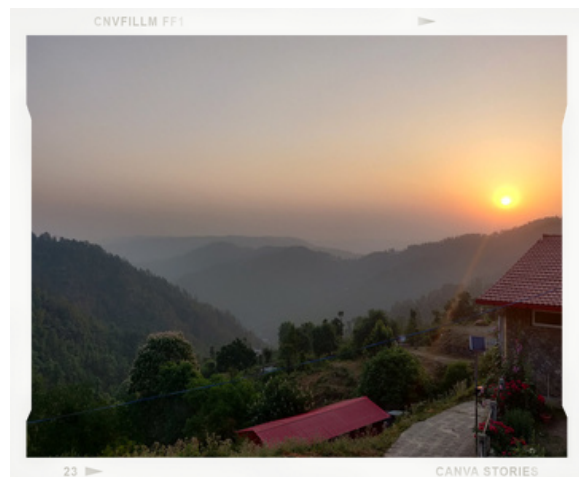
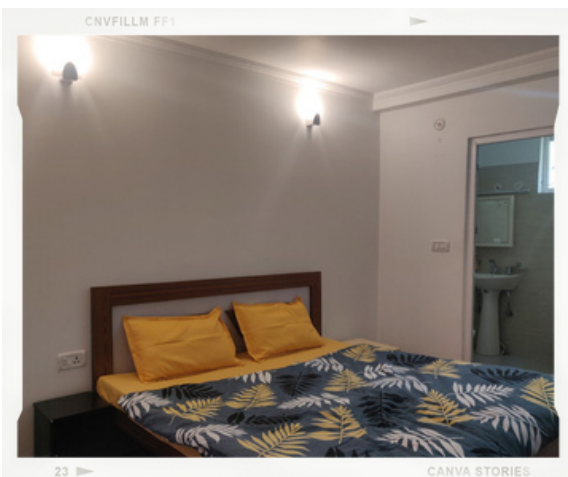
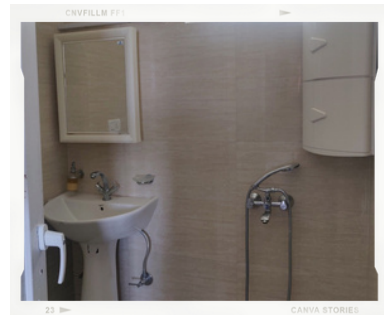


*Offer is subject to change without prior notice. Please confirm the offer while making the booking.

ACCOMMODATION OPTIONS

INDEPENDENT STUDIO ROOMS WITH KITCHENETTE

**Rs. 4500/- Per Night
on Double Occupancy
(without meals)**

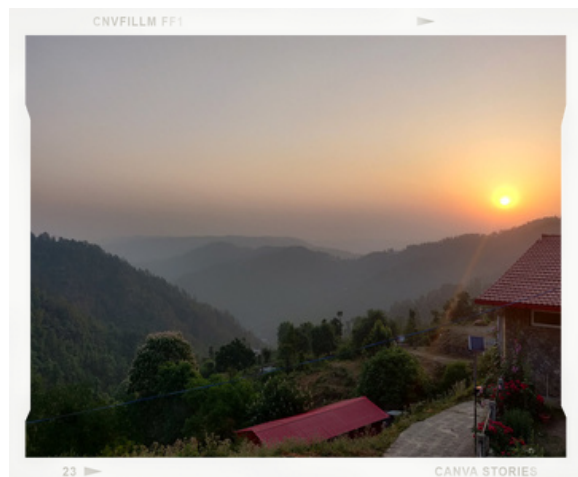
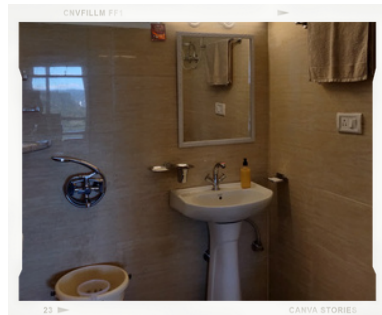


*Offer is subject to change without prior notice. Please confirm the offer while making the booking.

ACCOMMODATION OPTIONS

INDEPENDENT STUDIO ROOMS WITH KITCHENETTE

**Rs. 4500/- Per Night
on Double Occupancy
(without meals)**

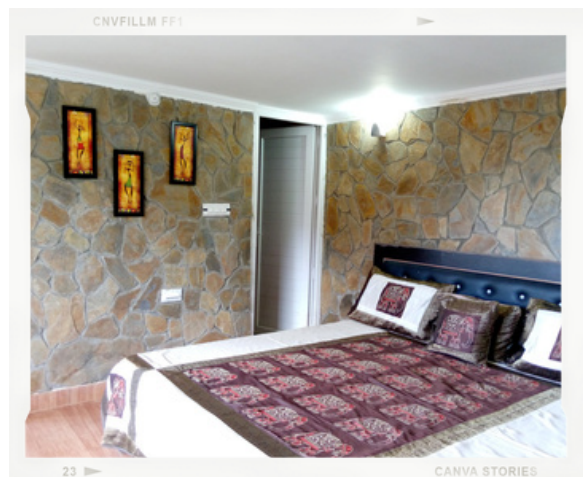
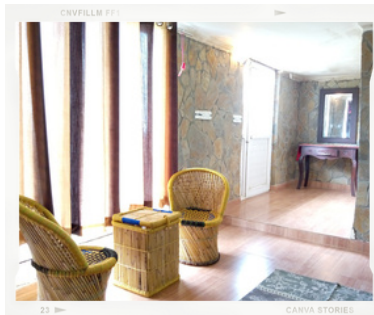


*Offer is subject to change without prior notice. Please confirm the offer while making the booking.

ACCOMMODATION OPTIONS

COTTAGE ROOM WITH HIMALAYAN VIEW

**Rs. 4000/- Per Night
on Double Occupancy
(without meals)**



*Offer is subject to change without prior notice. Please confirm the offer while making the booking.

OTHER ADDITIONS AND PACKAGES

Extra Person (Age 6+)

Rs. 500/- Per Night (without meals)

Meals

**Rs. 250/- per person for breakfast
Rs. 300/- per person for lunch/dinner or
Rs. 750/- per person per day (all 3 meals)**

Checkin Time: 12 Noon

Checkout Time: 11 AM

**GROUP PACKAGE (Upto 12-14 People Accommodation)
@ Rs. 3000 per person per day (Breakfast & Dinner
inclusive)**

CONTACT US FOR SPECIAL CORPORATE OR MNC DISCOUNT



*Offer is subject to change without prior notice. Please confirm the offer while making the booking.

The Lap Of Mother Nature Awaits You!

**Tucked away in the mountains, you enjoy a comfortable stay
at your own Himalayan abode, Poetry By The Hills**



CONNECT WITH US TODAY



CONTACT PERSON: PAVAN JAIN

PHONE NO: 9811 341 673



**43, The Indus Valley, Sunderkhal, Near Dhanachuli Bend,
Mukteshwar, Dist. Nainital, Uttarakhand 263132**